

Joy Baluch AM Bridge Duplication Project

Bridge repairs involving speed, lane restrictions and detour for oversized vehicles

The Joy Baluch AM Bridge is a vital connection in the National Land Transport Network at Port Augusta, linking communities across the Spencer Gulf and supporting commuter, commercial, and freight traffic in northern South Australia. It's also a key route for tourists heading to the Eyre Peninsula, northern South Australia, and beyond.

The \$200 million Joy Baluch AM Bridge Duplication Project, funded by the Australian and South Australian governments (80:20), is being delivered by the Port Wakefield to Port Augusta (PW2PA) Alliance.

To safely carry out repairs on the **northbound lanes** of the Joy Baluch AM Bridge, the following traffic arrangements will be in place from **Tuesday 28 January** until Monday 3 February 2025:

- One lane will be closed for repairs.
- One lane will always remain open.
- As repairs on one lane are complete, traffic will switch to the other lane to complete the repairs.
- **Oversized vehicles (3.5m+) will detour via Yorkeys Crossing.** See map overleaf for details.

Following completion of the northbound works, crews will move to undertake repairs on the **southbound** section from **Tuesday 4 February 2025**.

- One lane will be closed for repairs.
- One lane will always remain open.
- **Oversized vehicles (3.5m+) will detour via Yorkeys Crossing.** See map overleaf for details




To safely carry out these works there will be changes to traffic conditions to keep everyone safe. Speed and lane restrictions will be in place during working hours. Please follow traffic management directions while works are in progress.

Some noise disturbance can be expected at times, however the work will be managed to minimise disturbance to nearby residents and businesses as much as practically possible.

If you have any questions or would like to speak to a member of the project team, please call 1300 161 407 or email enquiries@pw2pa.com.au

Kind regards,
Community Engagement and Stakeholder Team
PW2PA Alliance

CONTACT

-  1300 161 407
-  enquiries@pw2pa.com.au
-  www.pw2pa.com.au



Australian Government



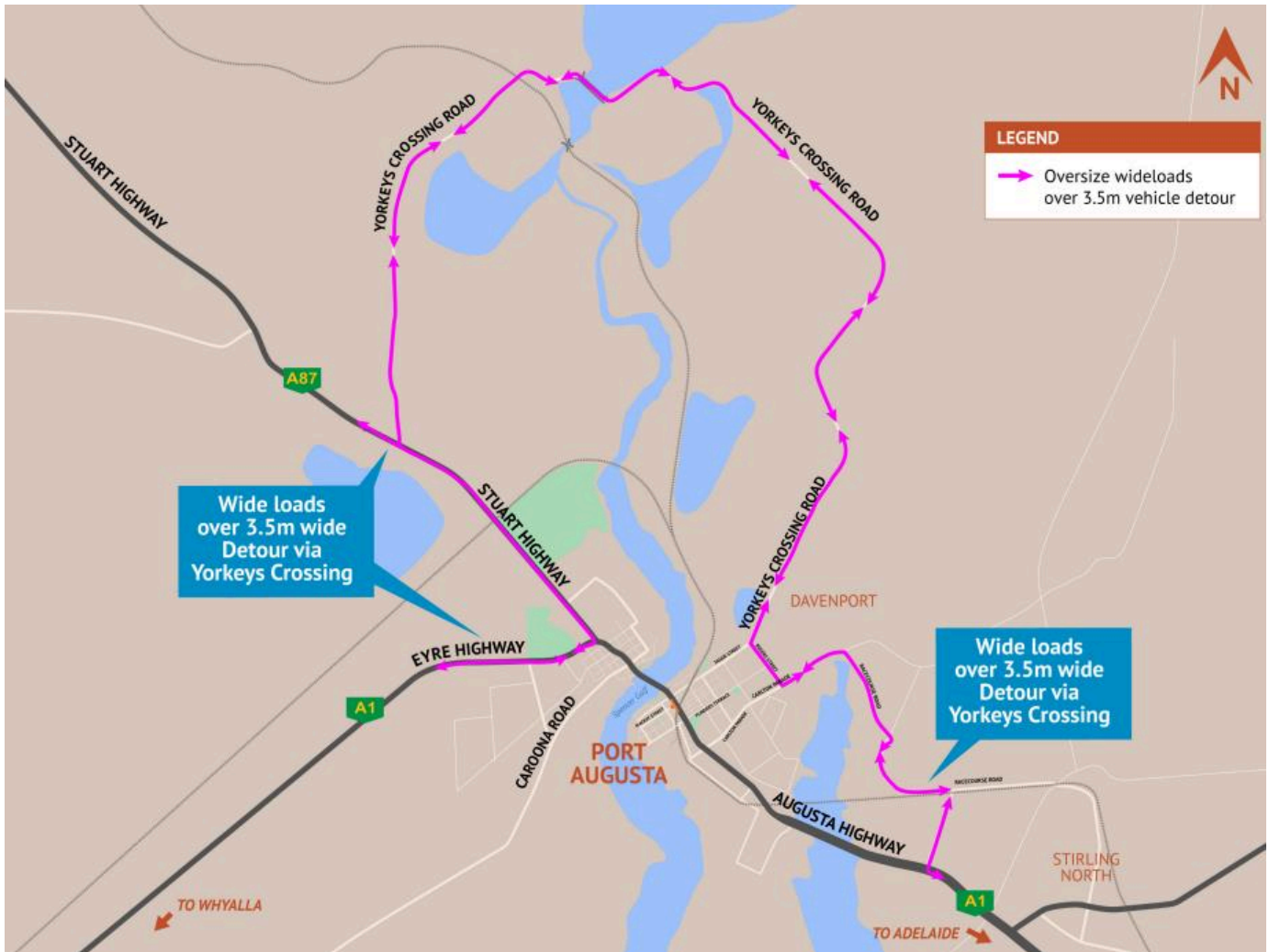
Government
of South Australia



Oversized Vehicle Detour via Yorkeys Crossing

Northbound: **Tuesday 28 January to Monday 3 February 2025**

Southbound: **Tuesday 4 February until Saturday 8 February 2025**



CONTACT



1300 161 407



enquiries@pw2pa.com.au



www.pw2pa.com.au

Joy Baluch AM Bridge Duplication Project

Traffic Changes – January and February 2025

PW2PA
ALLIANCE



Maintenance works on original Joy Baluch AM Bridge (Northbound lanes)

Tuesday 28 January to Monday 3 February 2025



1300 161 407
enquiries@pw2pa.com.au
www.pw2pa.com.au

Joy Baluch AM Bridge Duplication Project

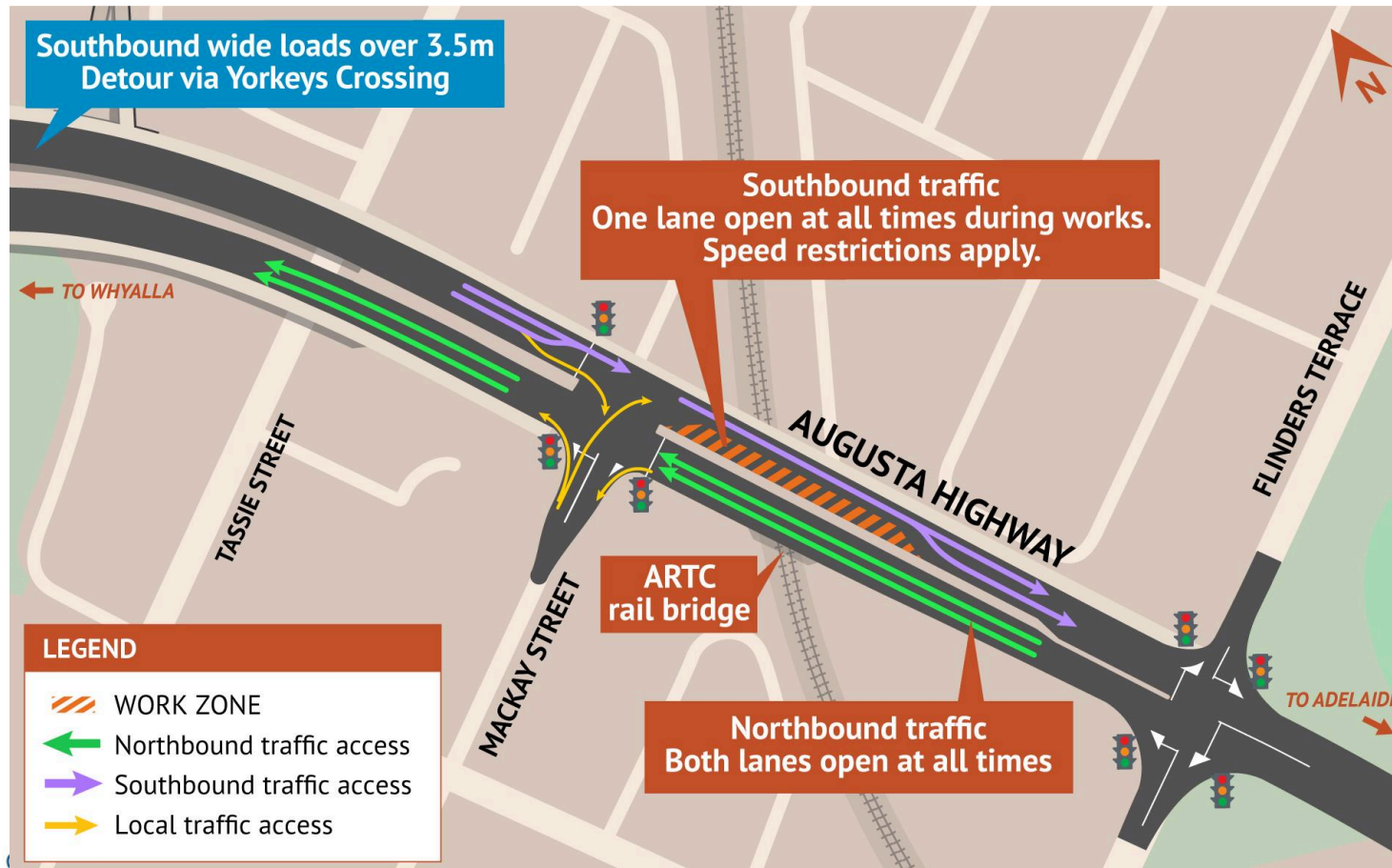
Traffic Changes – January and February 2025

PW2PA
ALLIANCE



Maintenance works on existing Joy Baluch AM Bridge (Southbound lanes)

Tuesday 4 February to Saturday 8 February 2025



1300 161 407
enquiries@pw2pa.com.au
www.pw2pa.com.au