

Port Wakefield to Port Augusta ALLIANCE



Damien Walsh, Project Manager
RDA Economic Forum 22 March 2023

www.pw2pa.com.au



Australian Government



Government
of South Australia
Department for Infrastructure
and Transport

Acknowledgement of Country

PW2PA
ALLIANCE



The PW2PA Alliance acknowledges the Barngarla People as the Traditional Custodians of the land we meet on today and recognises their continuing connection to land and waters.

We pay our respects to the diversity of cultures; significance of contributions and to Elders past, present and emerging.



PW2PA Alliance structure

PW2PA
ALLIANCE



Owner Participant



Government of South Australia
Department for Infrastructure
and Transport

Constructor NOP



Designer NOP

aurecon



Constructor
Services
Sub-Alliance

McMAHON
SERVICES

Constructor
Services
Sub-Alliance



Marine
Specialist



Community
& Stakeholder
Subconsultant



Urban
& Landscape
Design
Subconsultant

HASSELL

Select Packages

Tier 2 – 4 Contractors

Small to Medium Size Locally Based Contractors & Consultants





The Alliance is delivering:

- Port Wakefield Overpass and Highway Duplication (delivered January 2023)
- Augusta Highway Duplication planning study
- Augusta Highway Duplication between Port Wakefield and Lochiel + overtaking lanes at Lochiel and Redhill
- Eyre Peninsula overtaking lanes
- Dublin Saleyard Access upgrade
- Joy Baluch AM Bridge Duplication in Port Augusta + Swimming Pontoon
- Flinders Ports, Port Pirie – Title H upgrade to facilitate grain export and container movements
- Port Augusta's Great Western Bridge demolition
- Hesso level-crossing grade separation study

OFFICIAL

Joy Baluch AM Bridge Duplication Project

PW2PA
ALLIANCE



Photo courtesy Department for Infrastructure and Transport

WHERE WE STARTED: AERIAL VIEW OF JOY BALUCH AM BRIDGE, SEPTEMBER 2020

www.pw2pa.com.au



Australian Government



Government
of South Australia
Department for Infrastructure
and Transport

Joy Baluch AM Bridge Duplication Project



THE FINAL DESIGN, OCTOBER 2020

Joy Baluch AM Bridge Duplication Project



SHARED USE PATH RAMP & LOOKOUT

A new ramp provides Shared Use Path access from the new Joy Baluch AM Bridge to the existing Eastside Foreshore path network.

The turnback platform of this ramp has been extended to provide a lookout which includes custom seating, interpretive signage and custom sculptural artwork.

The lookout affords views of the historic No. 4 Barge Wreck & Junction Railyards, to key vistas north over the Gulf and to the Flinders Ranges and Dutchmans Stern beyond.



OPEN BALUSTRADE PRESERVING GULF VIEWS

An open balustrade has been designed for both the existing and new Joy Baluch AM Bridge balustrade systems.

Visibility towards the Gulf is a key focus of the design, utilising an open palisade style balustrade.



TWO PIER DESIGN FOR NEW JOY BALUCH AM BRIDGE

A two pier design has been adopted for the new Joy Baluch AM Bridge structural supports.

The two pier design aligns with the existing piers beneath the bridge allowing for the greatest visibility across the gulf with the least amount of vertical obstructions.



EASTSIDE FORESHORE

The existing public realm facilities will be extended beneath the Eastside Foreshore with the relocation of the Yula Street turnaround to the western side of the existing Joy Baluch AM Bridge.

These works will include the extension of existing pathways, the relocation of interpretive signage to the eastern side of the new Joy Baluch AM Bridge, access to the new ramp with lookout and landscaping.



CONCEPT DESIGNS: BRIDGE, SHARED USE PATH AND LOOKOUT

Joy Baluch AM Bridge Duplication Project

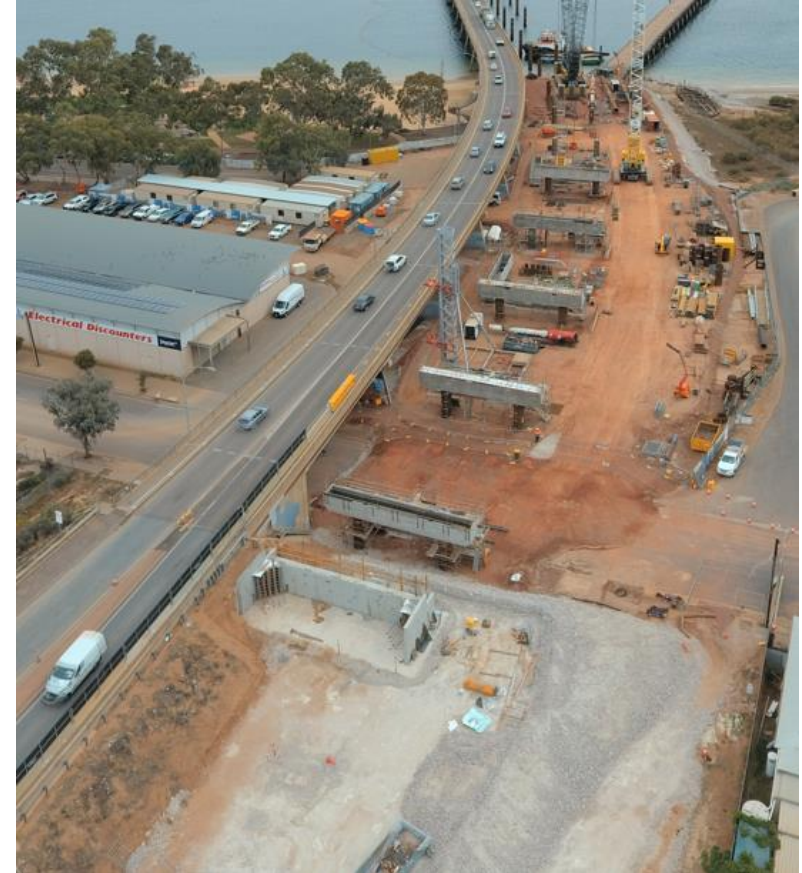


Local Procurement

82.27% of contractors working with the Alliance are local SA companies, e.g. providing steelwork; concrete; bulk goods; electrical; quarry supplies; and traffic management

Case study: Whyalla Precast

- Supplied 21 precast concrete headstock shells
- Employed 10 additional staff
- Engaged a range of other local suppliers
- Small local contractor awarded a critical, highly technical package – supported by Alliance to achieve successful outcome



OFFICIAL

Joy Baluch AM Bridge Duplication Project

PW2PA
ALLIANCE



Photo courtesy Department for Infrastructure and Transport



**17 November 2021:
New bridge construction**

www.pw2pa.com.au



Australian Government



Government
of South Australia
Department for Infrastructure
and Transport

Joy Baluch AM Bridge Duplication Project



Local Procurement

- **Ferretti**, Whyalla – structural steelwork (excluding piles) for the new and existing bridges
- **Total Electrical Construction**, Pt Pirie – supplied all lighting, communications, and traffic signal works
- **Whyalla Diving**, Whyalla – used for all diving works on site
- **Far North Traffic Alliance** – local indigenous owned traffic management company (Dieri Aboriginal Corporation)
- **Intract** – South Australian local Indigenous-owned company, constructed 331 concrete barriers at their Dry Creek facility for PW2PA Alliance projects

Supplies

- **Black Oak Quarries**, Iron Knob – Pavement materials
- **Augusta Quarries**, Mambray Creek – Rock and fill materials
- **Holcim**, Pt Augusta batch plant – Concrete
- **Boral**, Whyalla batch plant – Asphalt

OFFICIAL

Joy Baluch AM Bridge Duplication Project

PW2PA
ALLIANCE



11 May 2022:
New bridge construction
nearing completion

Photo courtesy Department for Infrastructure and Transport

www.pw2pa.com.au



Australian Government



Government
of South Australia
Department for Infrastructure
and Transport

Joy Baluch AM Bridge Duplication Project



Upskilling

- May 2021 – PW2PA, Intract and TAFE SA, delivered Certificate II in Civil Construction for 16 long-term unemployed Indigenous people
- January 2023 – PW2PA, Carey Training and project construction partners, delivered Certificate II in Civil Construction for 11 long-term unemployed Indigenous people
- 15 Civil Supervisors from CPB, McMahon Services, Buttrose Earthmovers and Zancott Recruitment completing the Certificate IV in Civil Construction Supervision



OFFICIAL

Joy Baluch AM Bridge Duplication Project

PW2PA
ALLIANCE



Photo courtesy Department for Infrastructure and Transport



**17 November 2022:
Existing bridge works and SUP install**

www.pw2pa.com.au



Australian Government



Government
of South Australia

Department for Infrastructure
and Transport

Joy Baluch AM Bridge Duplication Project

PW2PA
ALLIANCE



Indigenous Procurement

- Far North Traffic Alliance
- Bunji Hire
- Raw Civil
- Karta Indigenous Services
- Zancott Recruitment
- Ngurra Civil and Construction
- Intract

Indigenous Staff

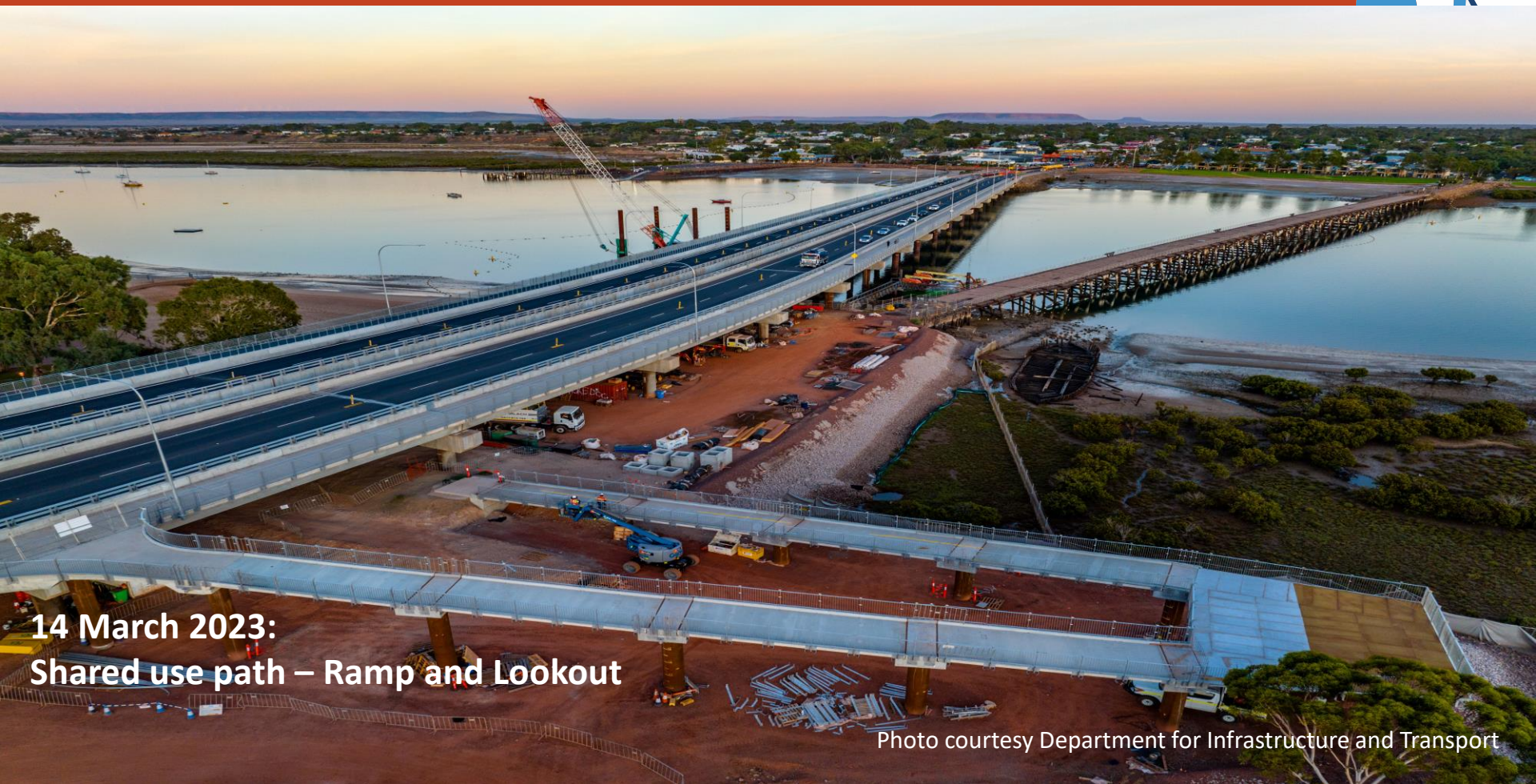
- Indigenous suppliers: 97,055 hours (as of 31 Jan 2023).
- Indigenous workforce: 148,692.29 hours (as of 31 Jan 2023).



OFFICIAL

Joy Baluch AM Bridge Duplication Project

PW2PA
ALLIANCE



**14 March 2023:
Shared use path – Ramp and Lookout**

Photo courtesy Department for Infrastructure and Transport

www.pw2pa.com.au



Australian Government



Government
of South Australia
Department for Infrastructure
and Transport

OFFICIAL

Joy Baluch AM Bridge Duplication Project

PW2PA
ALLIANCE



Photo courtesy Department for Infrastructure and Transport



Australian Government



Government
of South Australia

Department for Infrastructure
and Transport

OFFICIAL

Joy Baluch AM Bridge Duplication Project

PW2PA
ALLIANCE



**15 March 2023:
Traffic switch**

Photo courtesy Department for Infrastructure and Transport

www.pw2pa.com.au



Australian Government



Government
of South Australia

Department for Infrastructure
and Transport

Port Wakefield to Port Augusta ALLIANCE



www.pw2pa.com.au



Australian Government



Government
of South Australia

Department for Infrastructure
and Transport