



Joy Baluch AM Bridge Duplication Project

Changed Traffic Arrangements – Augusta Highway

The Joy Baluch AM Bridge is an important link in the National Land Transport Network at Port Augusta, providing access across the Spencer Gulf for commuter, commercial and freight vehicles in the northern region of South Australia. It is also a key tourist link to the Eyre Peninsula, northern South Australia and beyond.

The \$200 million Joy Baluch AM Bridge Duplication Project is a joint initiative of the Australian and South Australian governments (80:20), delivered by the Port Wakefield to Port Augusta (PW2PA) Alliance.

To safely facilitate works on the northbound carriageway of Augusta Highway between Flinders Terrace and Tassie Street, changed traffic arrangements will be implemented from **7pm Thursday, 29 September 2022, weather permitting.**

The changed traffic arrangements will see all motorists diverted onto the southbound carriageway of Augusta Highway north of Flinders Terrace, with a single lane open to traffic in each direction.

The following arrangements will be in place until **late 2022, weather permitting:**

- **Tassie Street** will be open to all traffic; and
- **Mackay Street** will be closed at the intersection with Augusta Highway. Light vehicles will be required to detour via Flinders Terrace and Young Street. Heavy vehicles will continue to detour via Flinders Terrace, Rogers Street and Tassie Street.

Signage will be in place to advise motorists and pedestrians of the changed traffic arrangements and available detour routes. Traffic controllers will be on site to assist during works when required.

To safely undertake these works, speed and lane restrictions will be in place during the works. Motorists are advised to take care when driving through the area.

Access to properties will be maintained throughout the works wherever possible, with advance notice provided if there is a need to temporarily restrict driveway access.

Some noise disturbance can be expected at times while these works are completed, however, the work will be managed to minimise disturbance to nearby residents and businesses as much as practically possible.

If you have any questions or would like to speak to a member of the project team, please call 1300 161 407 or email enquiries@pw2pa.com.au

The PW2PA Alliance appreciates your co-operation and patience while these important works are undertaken.

Kind regards,

Community Engagement and Stakeholder Team
PW2PA Alliance

CONTACT



1300 161 407



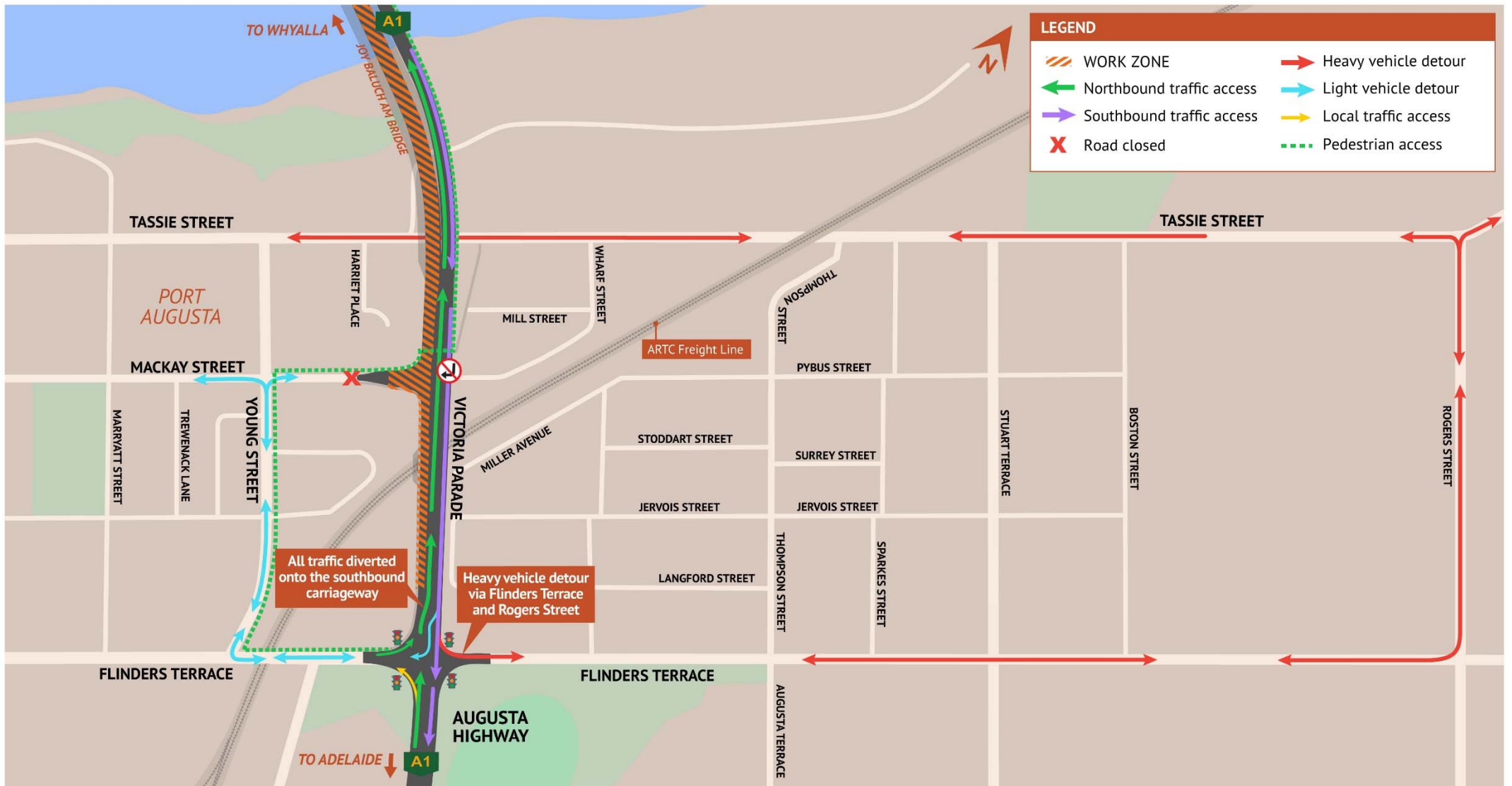
enquiries@pw2pa.com.au



www.pw2pa.com.au

Joy Baluch AM Bridge Duplication Project

Changed Traffic Arrangements – Augusta Highway



CONTACT

- 1300 161 407
- enquiries@pw2pa.com.au
- www.pw2pa.com.au