



Port Wakefield Overpass and Highway Duplication

Asphalting Night Works – Port Wakefield Highway

The \$124.5 million Port Wakefield Overpass and Highway Duplication Project is jointly funded by the Australian and South Australian governments (80:20) and is being delivered by the Port Wakefield to Port Augusta (PW2PA) Alliance. The project will improve traffic flow and reduce congestion for all road users, particularly, during peak travel times and public holidays, and improve safety and freight productivity along the National Land Transport Network.

To safely facilitate asphalting works in the Port Wakefield township, Port Wakefield Highway was temporarily closed northbound between Edward Street and just north of Wakefield River Bridge from **7.30pm Tuesday, 19 July**, to **5am Friday, 29 July 2022**, weather permitting. **Due to inclement weather, the closure has now been extended until 5am Thursday, 4 August 2022.**

The following traffic conditions will continue to be in place while these works are undertaken:

- northbound traffic travelling through the township will be diverted to the east of the service stations, with one lane open in each direction (see map overleaf);
- traffic accessing North Street, John Street, George Street and White Street will be detoured via Edward Street (see map overleaf);
- Shell Coles Express, United Port Wakefield and BP Truckshop service stations will only be accessible by light vehicles; and
- heavy vehicles, over three tonnes, will not be able to access Shell Coles Express, United Port Wakefield and BP Truckshop service stations and will need to use the 24 Seven Port Wakefield (Liberty) service station.

Signage is in place to advise motorists of the temporary road closure and available detour routes.

Some temporary pedestrian detours are in place around the works site, and pedestrians are advised to follow directional signage. Every effort is being made to minimise impacts to the community.

Access to local businesses and residences is being maintained during these works with advance notice provided if there is a need to temporarily restrict driveway access.

Please take extra care when workers are on site. Observe speed limits, lane restrictions and traffic controllers when travelling through the area.

Some noise disturbances can be expected at times while these works are completed, however, the work is being managed to minimise disturbance to nearby residents as much as practically possible.

The PW2PA Alliance appreciates your co-operation and patience while these important works are undertaken.

If you have any questions or would like to speak to a member of the project team, please call 1300 161 407 or email enquiries@pw2pa.com.au

Kind regards,
Community Engagement and Stakeholder Team
PW2PA Alliance

CONTACT



1300 161 407



enquiries@pw2pa.com.au

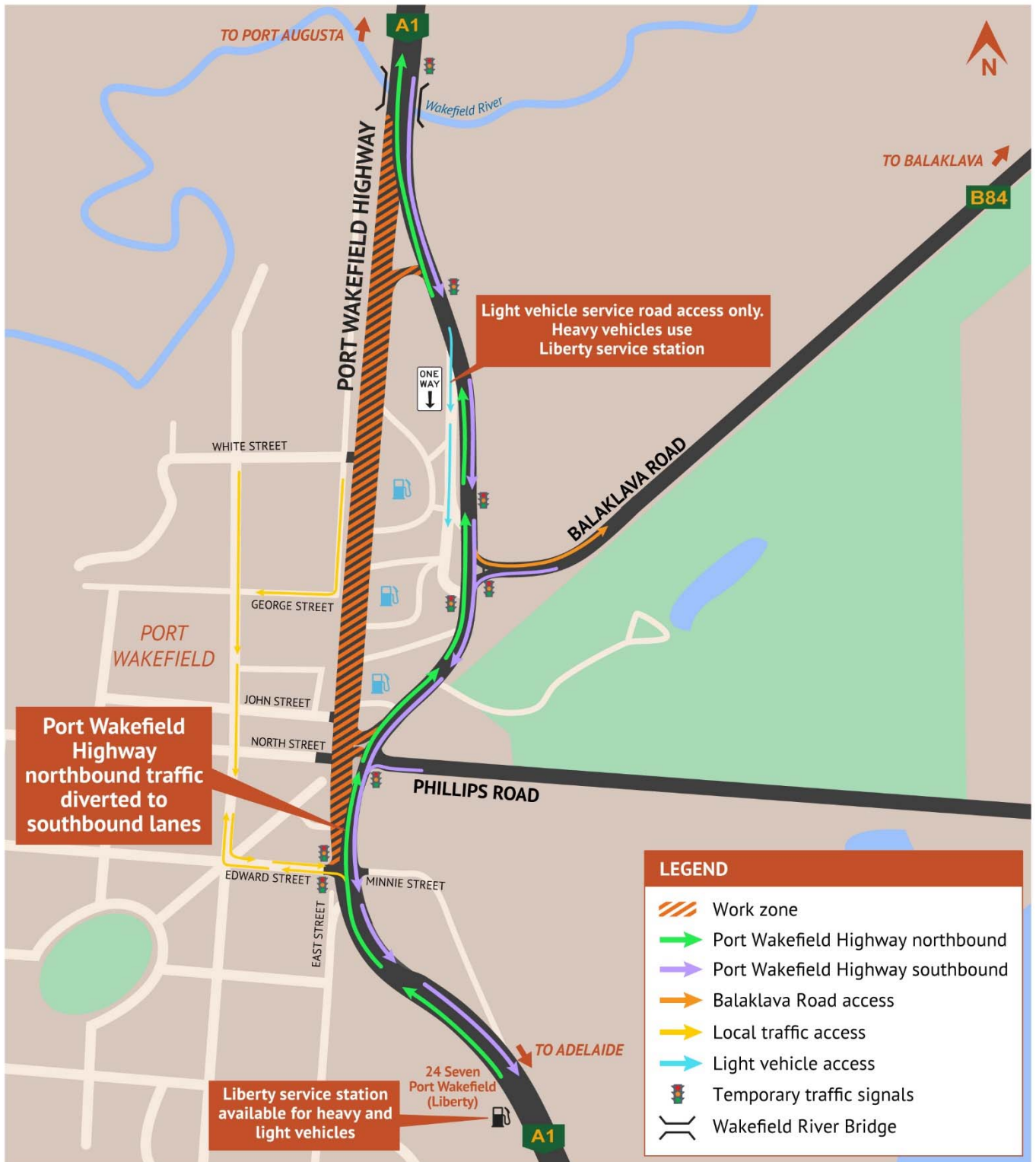


www.pw2pa.com.au

Port Wakefield Overpass and Highway Duplication Project

Asphalting Night Works - Port Wakefield Highway

PW2PA
ALLIANCE



CONTACT



1300 161 407



enquiries@pw2pa.com.au



www.pw2pa.com.au



Australian Government



Government of South Australia