



Port Wakefield Overpass and Highway Duplication

Easter Holiday Period Traffic Management

The Port Wakefield Overpass and Highway Duplication Project team wish you a happy and safe Easter break and Anzac Day long weekend.

Motorists are reminded that the new Port Wakefield Overpass is now open to traffic, removing all hazardous at-grade turn movements at the intersection of Port Wakefield Highway, Copper Coast Highway and Augusta Highway.

To reduce Easter and school holiday traffic delays as much as possible, additional traffic lanes will be open through the Port Wakefield township. Traffic is anticipated to increase between Thursday, 14 April 2022 (northbound) and Monday, 18 April (southbound), and on the Anzac Day long weekend.

The newly constructed southbound lanes east of Port Wakefield are now open, providing safer access to the service stations and the bakery. Additionally, the below traffic arrangements will be in place to assist traffic travelling through the township **from 6am, Wednesday, 13 April 2022**. Please see the map overleaf for more information.

For motorists travelling southbound:

- two lanes will be open to traffic from south of the Wakefield River Bridge to Shrike Road;
- access to Port Wakefield township will be via dedicated right turn lanes into Edward Street and East Street; and
- access to businesses on the western side of Port Wakefield Highway will be via the dedicated U-turn facility just north of Phillips Road.

For motorists travelling northbound:

- two lanes will be open to traffic between Shrike Road and the 24 Seven Port Wakefield (Liberty) service station; and
- access to Balaklava Road will be via the U-turn facility north of the township.

Please plan ahead and allow extra travel time as delays may be experienced during this period, and until project completion.

Please take extra care when workers are on site. Observe speed limits, lane restrictions and traffic controllers when travelling through the area. Signage will be in place to alert motorists to the changed traffic conditions.

Local Business and Pedestrian Access

Access to local businesses in the area will be maintained during this Easter and school holiday period, and local businesses appreciate your ongoing support. Pedestrian access will be maintained on the eastern side of Port Wakefield Highway with adequate signage in place.

Other Works

North of the township, northbound and southbound traffic will continue to travel one lane in each direction via the Wakefield River Bridge. The new northbound Wakefield River Bridge is expected to be complete in October 2022.

More Information

Residents and road users can call 1300 161 407 or email enquiries@pw2pa.com.au for more information. To stay up to date with the project, subscribe to email notifications via our project website at www.pw2pa.com.au, or download the SitePodium app.

CONTACT



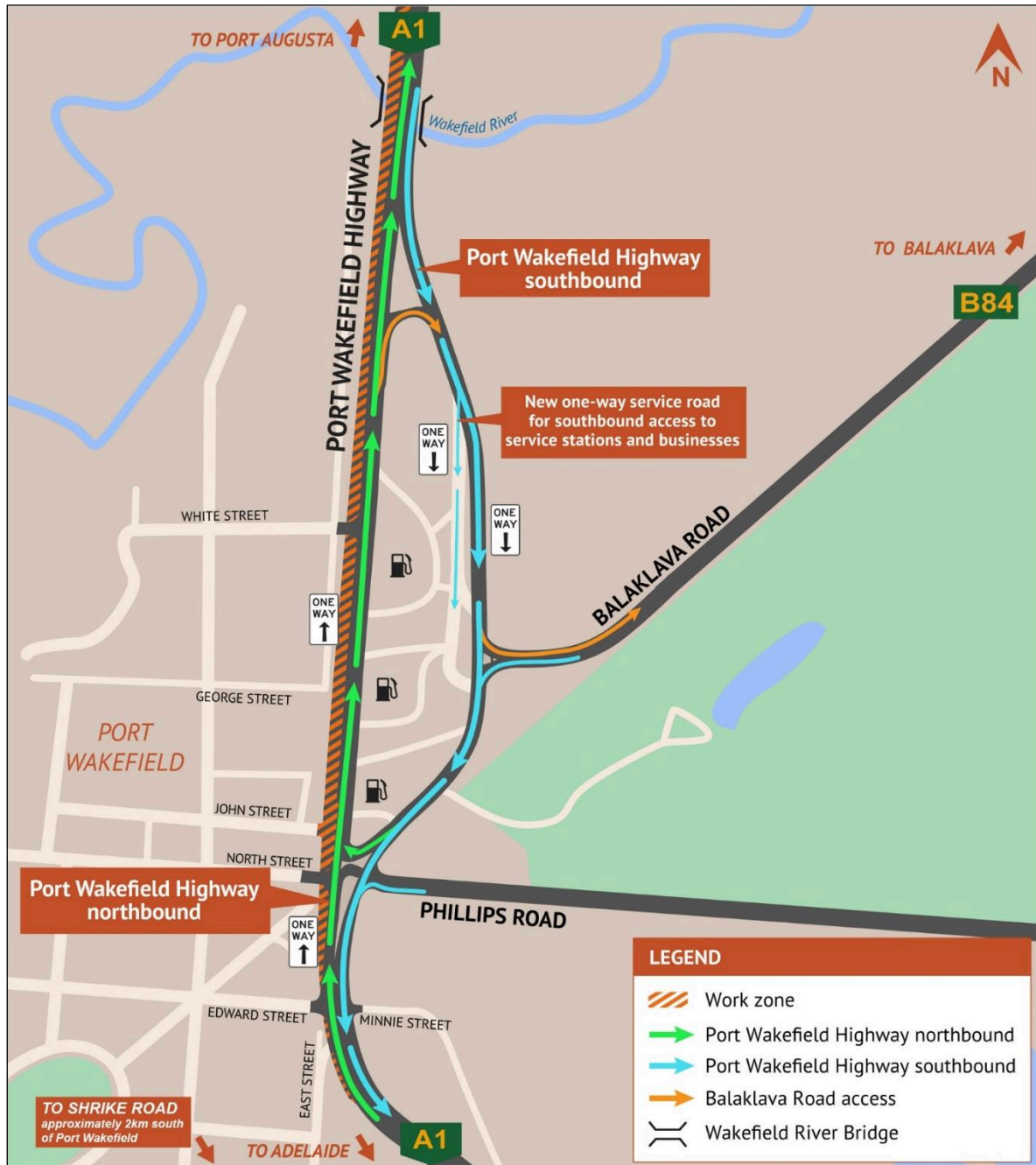
1300 161 407



enquiries@pw2pa.com.au



www.pw2pa.com.au



Port Wakefield Overpass and Highway Duplication Project

The \$124.5 million Port Wakefield Overpass and Highway Duplication Project is jointly funded by the Australian and the South Australian governments (80:20), being delivered by the Port Wakefield to Port Augusta (PW2PA) Alliance. The project will improve traffic flow and reduce congestion and improve road safety and freight productivity along the National Land Transport Network.

The PW2PA Alliance thank you for your co-operation and ongoing patience while these vital works continue.

**Community Engagement and Stakeholder Team
PW2PA Alliance**

CONTACT

 1300 161 407

 enquiries@pw2pa.com.au

 www.pw2pa.com.au