



# Port Wakefield Overpass and Highway Duplication

## Township Traffic Switch

The \$124.5 million Port Wakefield Overpass and Highway Duplication Project is jointly funded by the Australian and the South Australian governments (80:20) and is being delivered by the Port Wakefield to Port Augusta (PW2PA) Alliance. The project will improve traffic flow and reduce congestion for all road users, particularly, during peak travel times and public holidays, and improve safety and freight productivity along the National Land Transport Network.

As part of the Port Wakefield Overpass and Highway Duplication Project, a traffic switch will occur from **6am Wednesday, 30 March 2022** with the below traffic conditions in place.

### Southbound:

- the one-way southbound road east of the service stations will open to a single lane (see light blue arrows on the map over the page);
- the new one-way service road for southbound access to service stations and bakery will open in its permanent configuration (see light blue arrows on the map over the page); and
- motorists travelling southbound on the new road wanting to access the township or businesses on the western side will need to use the dedicated U-turn lane just north of Phillips Road (see green arrows on map overleaf).

### Northbound:

- the current road through the township will be reduced to a single northbound lane for approximately three months (see green arrows on the map overleaf);
- northbound access only will be provided out of North Street, John Street and White Street as part of the permanent configuration; and
- motorists travelling northbound through the township wanting to access Balaklava Road will need to turn right into the one-way, southbound road, just north of the township and then turn left into Balaklava Road (see orange arrows on the map overleaf).

North of the township, northbound and southbound traffic will continue to travel via the Wakefield River Bridge. The new northbound Wakefield River Bridge is expected to be complete in October 2022.

Please take extra care when workers are on site. Observe speed limits, lane restrictions and traffic controllers when travelling through the area. Signage will be in place to alert motorists to the changed traffic conditions. **Delays may be experienced until project completion, particularly during holiday periods.**

Pedestrian access will be maintained on the eastern side of Port Wakefield Highway with signage in place to advise pedestrians of the change in conditions.

Access to local businesses and residences in the area will be maintained during these works. Please continue to support local businesses.

Stay up-to-date with the project via the new SitePodium app. The app is available at no cost by downloading Site Podium from the [App Store](#) or [Google Play](#) to your smart phone or tablet.

If you have any questions or would like to speak to a member of the project team, please call 1300 161 407, email [enquiries@pw2pa.com.au](mailto:enquiries@pw2pa.com.au) or visit [www.pw2pa.com.au](http://www.pw2pa.com.au)

The PW2PA Alliance appreciates your co-operation and patience while these important works are undertaken.

Kind regards,  
**Community Engagement and Stakeholder Team**  
**PW2PA Alliance**

### CONTACT



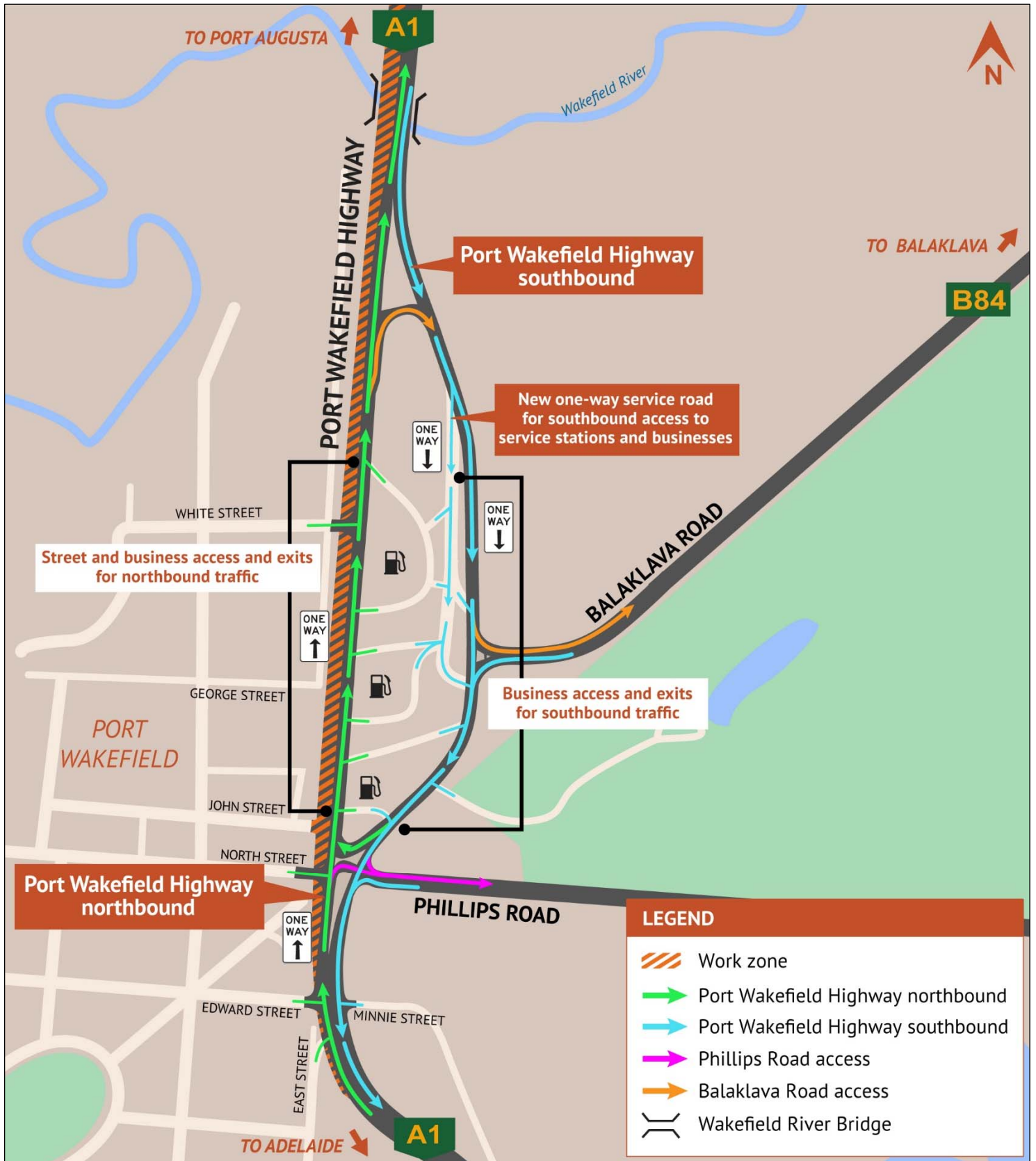
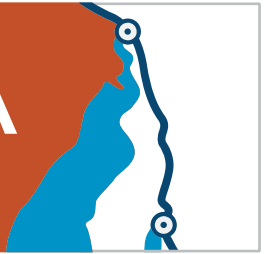
1300 161 407



[enquiries@pw2pa.com.au](mailto:enquiries@pw2pa.com.au)



[www.pw2pa.com.au](http://www.pw2pa.com.au)



CONTACT

1300 161 407

enquiries@pw2pa.com.au



www.pw2pa.com.au