



Port Wakefield Highway Upgrade

Temporary road closure – Phillips Road

The \$124.5 million Port Wakefield Overpass and Highway Duplication Project is jointly funded by the Australian and the South Australian governments (80:20) and is being delivered by the Port Wakefield to Port Augusta (PW2PA) Alliance. The project will improve traffic flow and reduce congestion for all road users, particularly, during peak travel times and public holidays, and improve safety and freight productivity along the National Land Transport Network.

To safely facilitate drainage and road pavement works, Phillips Road at the junction with Port Wakefield Highway, will be temporarily closed.

Timing of works:

Phillips Road will be temporarily closed at the junction with Port Wakefield Highway from **8am Monday, 14 February to 6pm Saturday, 19 February 2022 (weather permitting)**.

What to expect:

You may also notice some odour which is common when asphaltting works are underway.

During these works, a temporary detour will be in place via Balaklava Road and Berno Road (see detour map overleaf). To safely undertake these works, speed and lane restrictions will also be in place.

Please take extra care when workers are on site. Observe speed limits, lane restrictions and traffic controllers when travelling through the area. Signage will be in place to alert motorists to the changed traffic conditions.

Some noise disturbance can be expected at times while these works are completed, however the work will be managed to minimise disturbance to nearby residents and businesses as much as practically possible.

Access to local businesses and residences will be maintained during these works. Please continue to support local businesses.

Some temporary pedestrian detours will be in place around the works site and pedestrians are advised to follow directional signage. Every effort will be made to minimise impacts to the community.

Stay up-to-date with the project via the new SitePodium app. The app is available at no cost by downloading Site Podium from the [App Store](#) or [Google Play](#) to your smart phone or tablet.

If you have any questions or would like to speak to a member of the project team, please call 1300 161 407, email enquiries@pw2pa.com.au or visit www.pw2pa.com.au

The PW2PA Alliance appreciates your co-operation and patience while these important works are undertaken.

Kind regards,

Community Engagement and Stakeholder Team
PW2PA Alliance

CONTACT



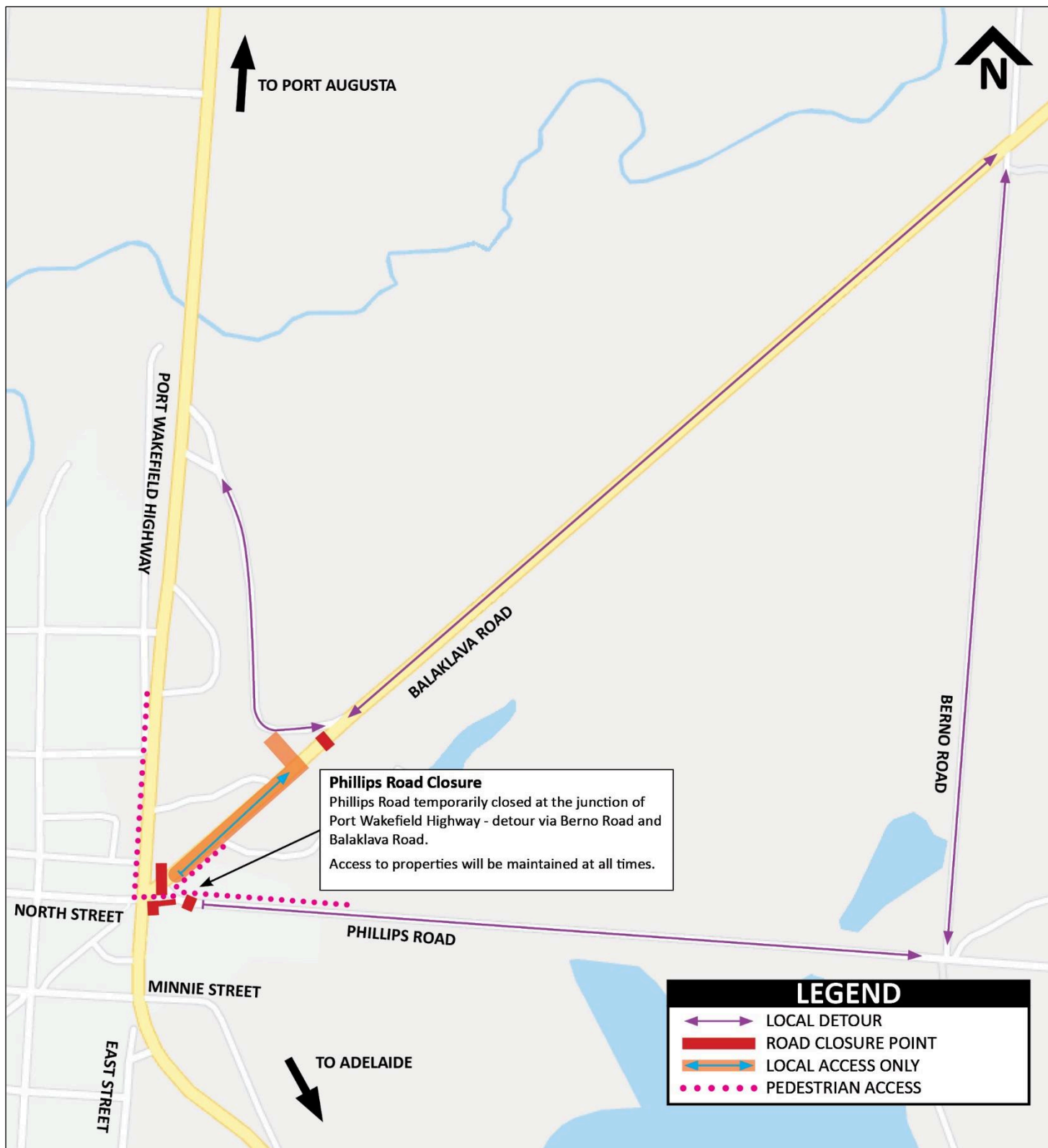
1300 161 407



enquiries@pw2pa.com.au



www.pw2pa.com.au



CONTACT

1300 161 407

enquiries@pw2pa.com.au



www.pw2pa.com.au