



Joy Baluch AM Bridge Duplication Project

Marine exclusion area – Spencer Gulf waters

The Joy Baluch AM Bridge is an important link in the National Land Transport Network at Port Augusta, providing access across the Spencer Gulf for commuter, commercial and freight vehicles in the northern region of South Australia. It is also a key tourist connection to the Eyre Peninsula, northern South Australia and beyond.

The Joy Baluch AM Bridge Duplication Project is a joint initiative of the Australian and South Australian governments and will be delivered by the Port Wakefield to Port Augusta Project (PW2PA) Alliance.

As part of the project, the PW2PA Alliance advises that a marine exclusion area will be in place around the works area (see map overleaf). No public access into the marine exclusion area will be permitted for any activities including swimming, snorkelling, fishing or boating. The marine exclusion area will be marked by safety buoys (see image below), which will be clearly visible both day and night.

Timing of marine exclusion area:

Tuesday, 19 January 2021 to end 2022.

What to expect:

To construct a foundation for the new bridge, steel piles will be driven into the sea bed. This activity will produce underwater noise. Please avoid any underwater activities within the vicinity of the works.

Access to boat ramps and the Eastside and Westside Foreshores will not be impacted by this marine exclusion area.

Any person wishing to access the beaches or gulf waters north of the marine exclusion area, will need to access these areas from the nearest boat ramp or walkway.

For additional information please visit www.pw2pa.com.au/joy-baluch-am-bridge-duplication/ or drop by the Community Hub, 45 Commercial Road, Port Augusta.

Stay up-to-date with the project via the new SitePodium app. The app is available at no cost by downloading Site Podium from the [App Store](#) or [Google Play](#) to your smart phone or tablet.

If you have any questions or would like to speak to a member of the project team please call 1300 161 407, email enquiries@pw2pa.com.au or visit www.pw2pa.com.au

The PW2PA Alliance appreciates your co-operation and patience while these important works are undertaken.



Example of safety buoys

Kind regards

Community Engagement and Stakeholder Team
PW2PA Alliance

CONTACT



1300 161 407



enquiries@pw2pa.com.au



www.pw2pa.com.au



Australian Government

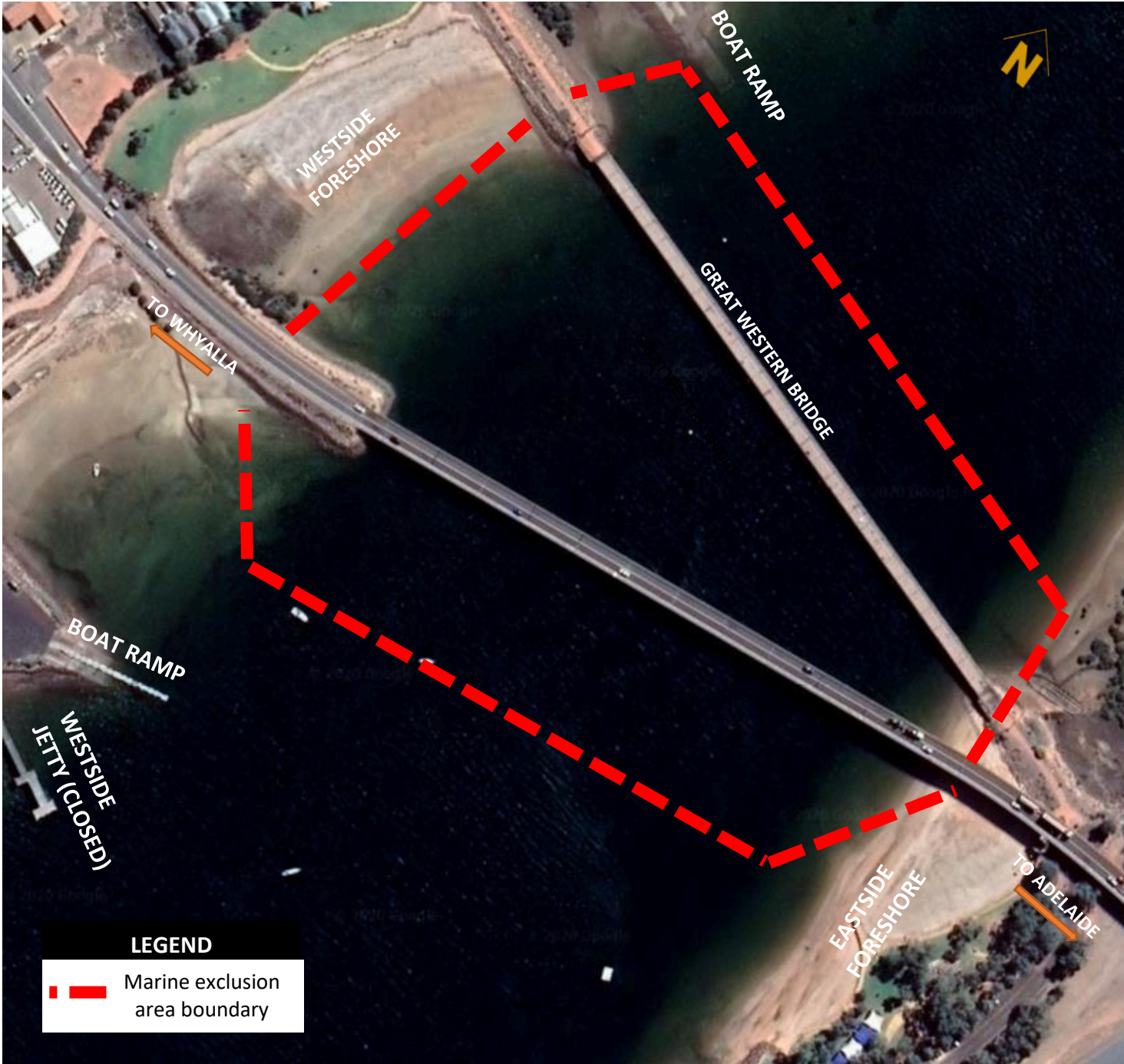
BUILDING OUR FUTURE





Government
of South Australia



**BUILDING
WHAT MATTERS**



CONTACT

-  1300 161 407
-  enquiries@pw2pa.com.au
-  www.pw2pa.com.au

